



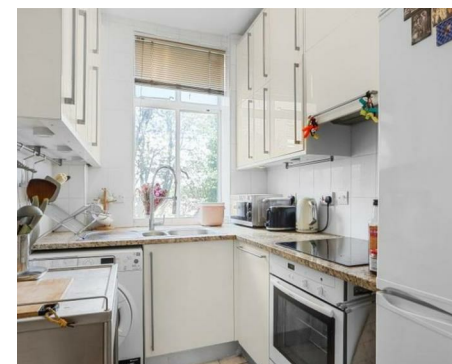
NEWINGTON  
LONDON

2 Bedrooms

Apartment

Located in London

£705 Per Month



info@newingtonstates.com

<http://www.newingtonstates.com>

020 7724 2233



A well-presented two-bedroom, two-bathroom apartment set within a popular portered block in Marylebone with lift access. The property features spacious rooms, a fully fitted kitchen, and carpeted flooring throughout.

Ideally located close to the excellent shops, cafés, and transport links of Marylebone and Baker Street, offering convenient access to all local amenities.

EPC rating: C

## Energy Efficiency Rating: C

Agents Note: Whilst every care has been taken to prepare these particulars, they are for guidance purposes only. All measurements are approximate and are for general guidance purposes only and whilst every care has been taken to ensure their accuracy, they should not be relied upon and potential buyers/tenants are advised to recheck the measurements.

# NEWINGTON LONDON

60 Upper Montagu Street

London

W1H 1SN

020 7724 2233

[info@newingtonstates.com](mailto:info@newingtonstates.com)

<http://www.newingtonstates.com>